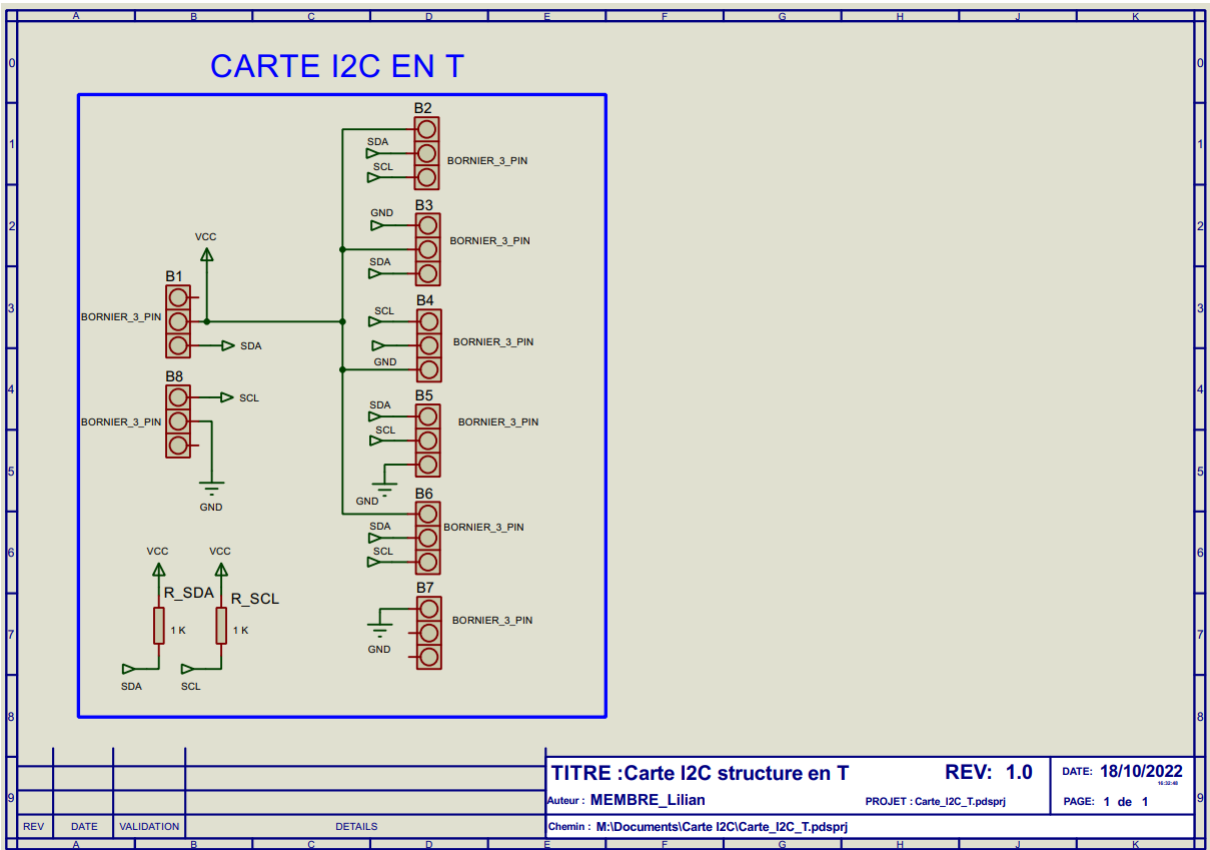


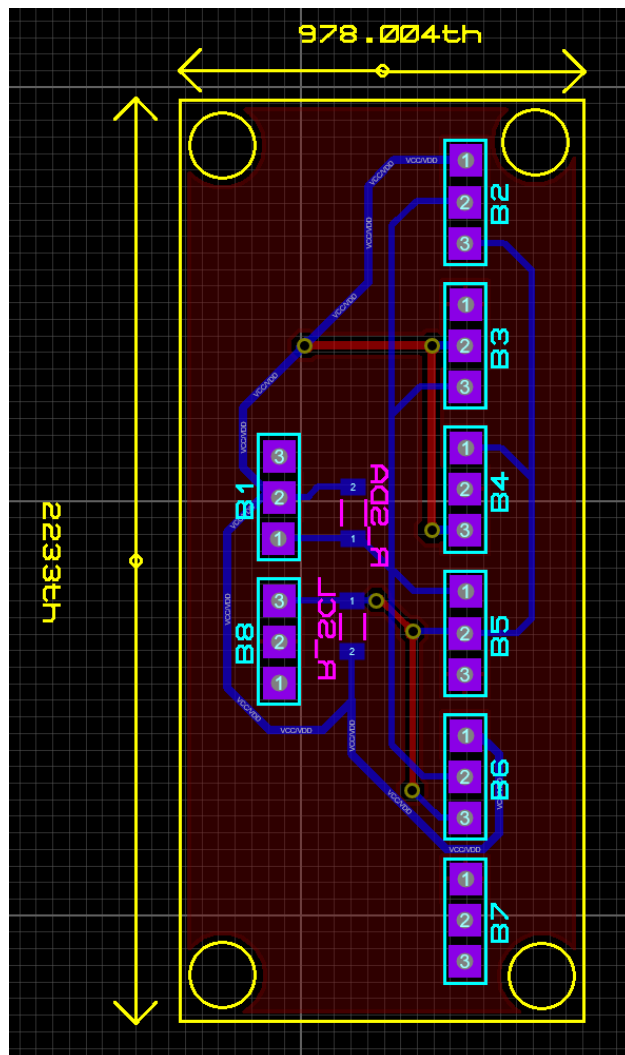
# CARTE I2C EN T

Schéma :

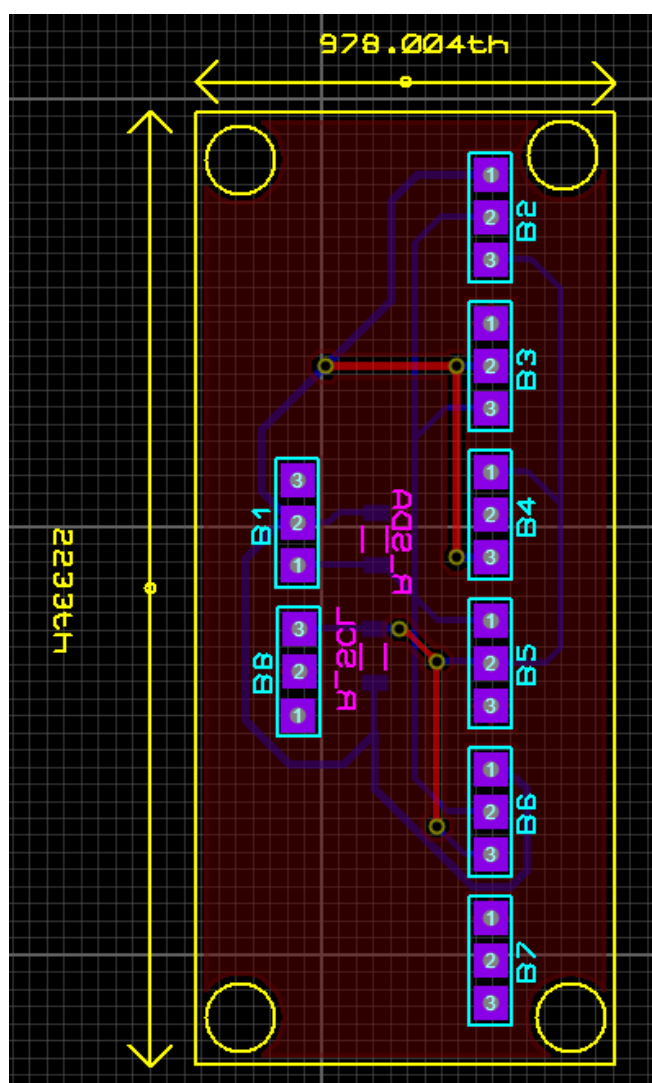


PCB :

-Bottom Copper

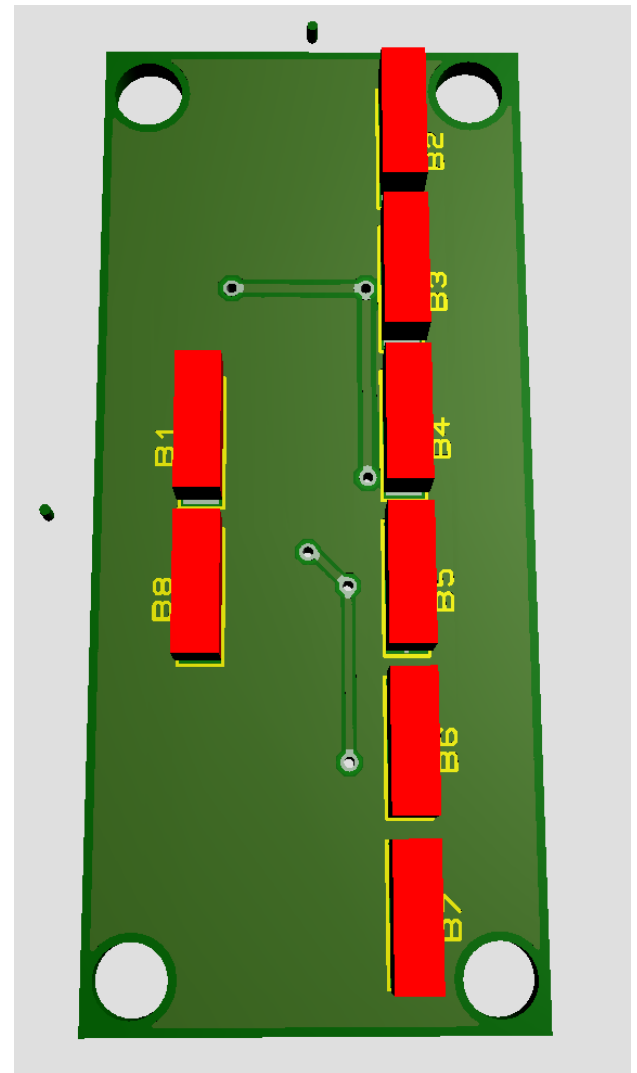
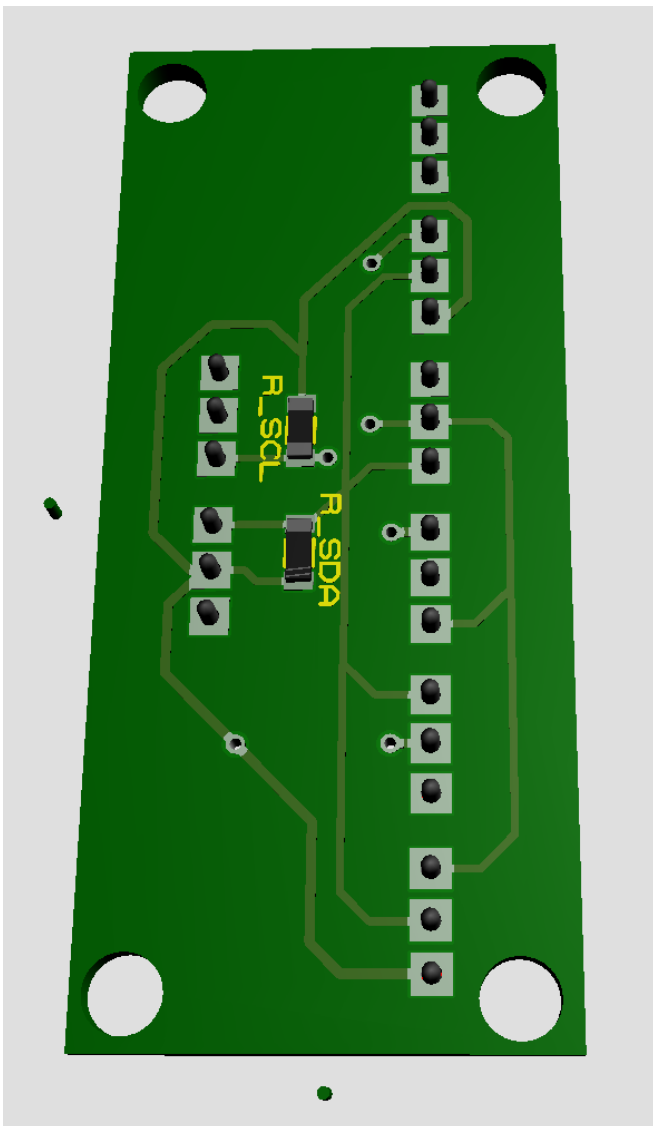


-Top Copper



Vue 3D :

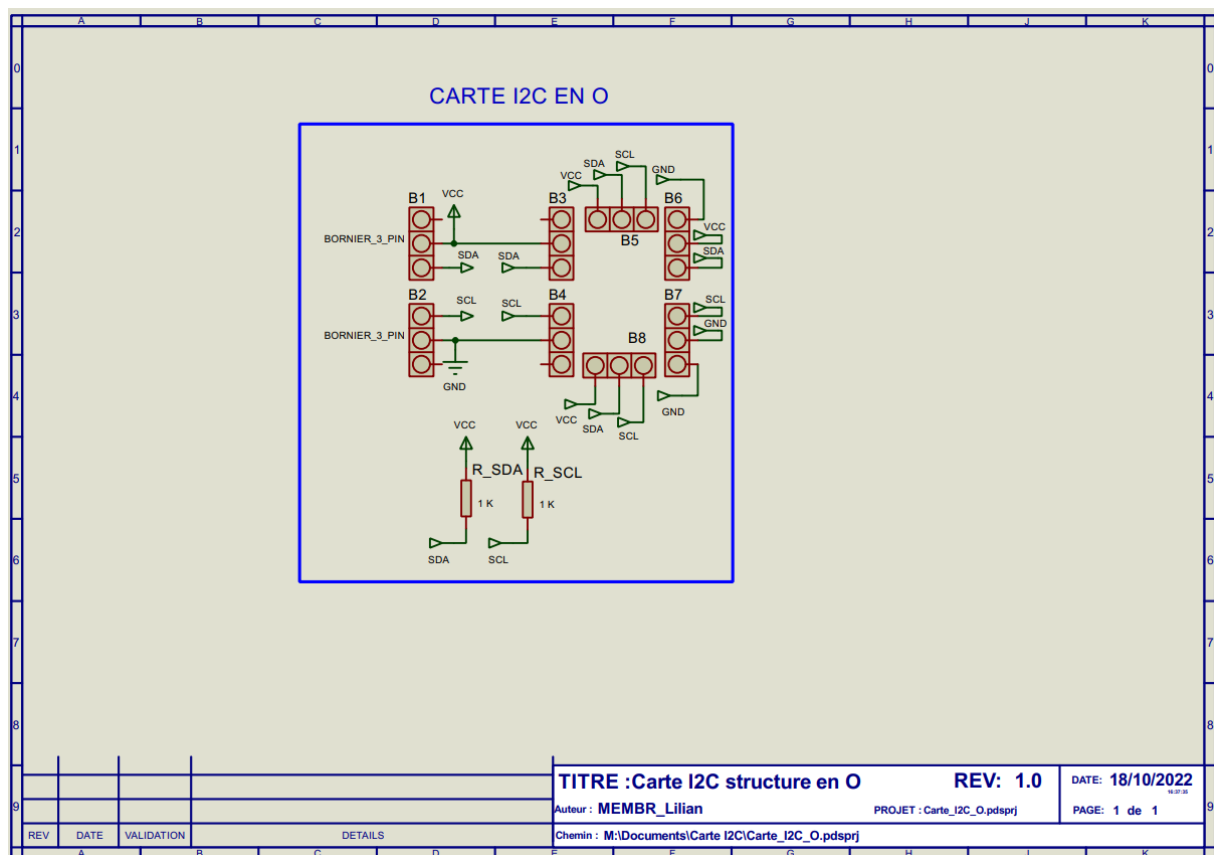
-Vue du dessus



-Vue du dessous

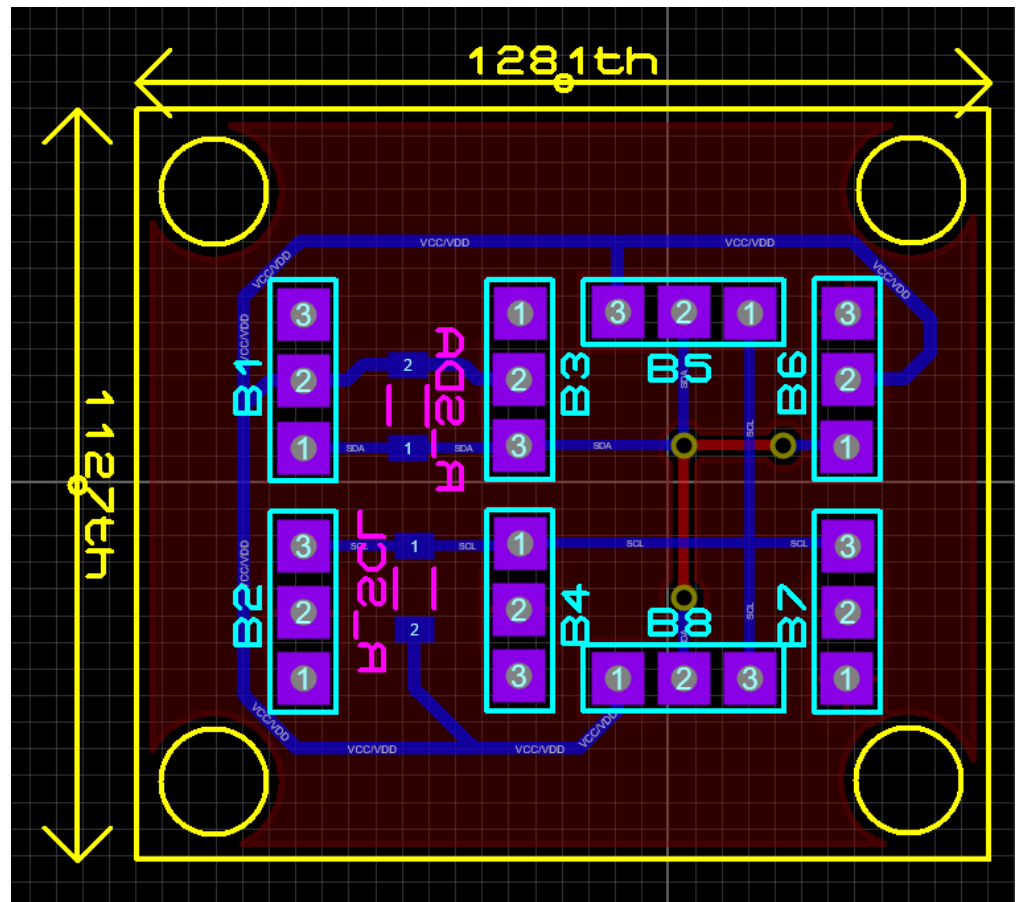
# Carte I2C en O

Schéma :

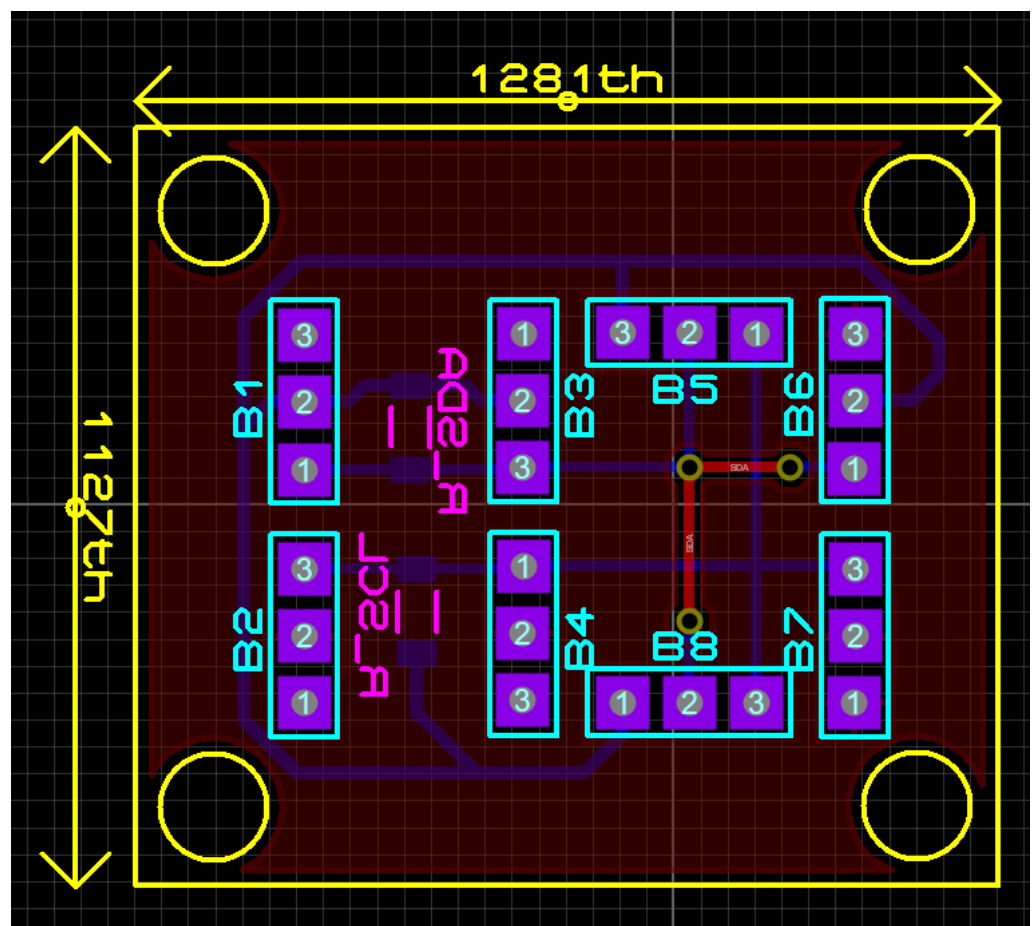


PCB :

-Bottom Copper

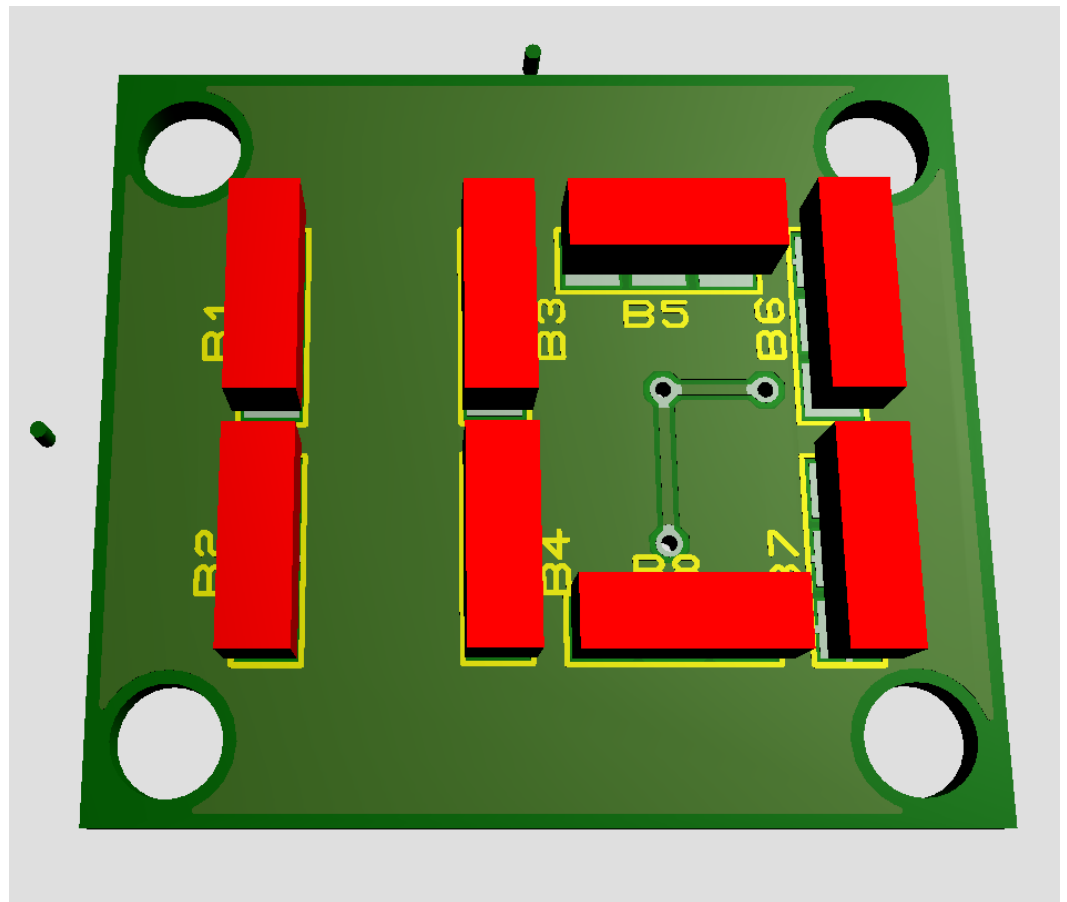


-Top Copper



Vue 3D :

-Vue du dessus



-Vue du dessous

